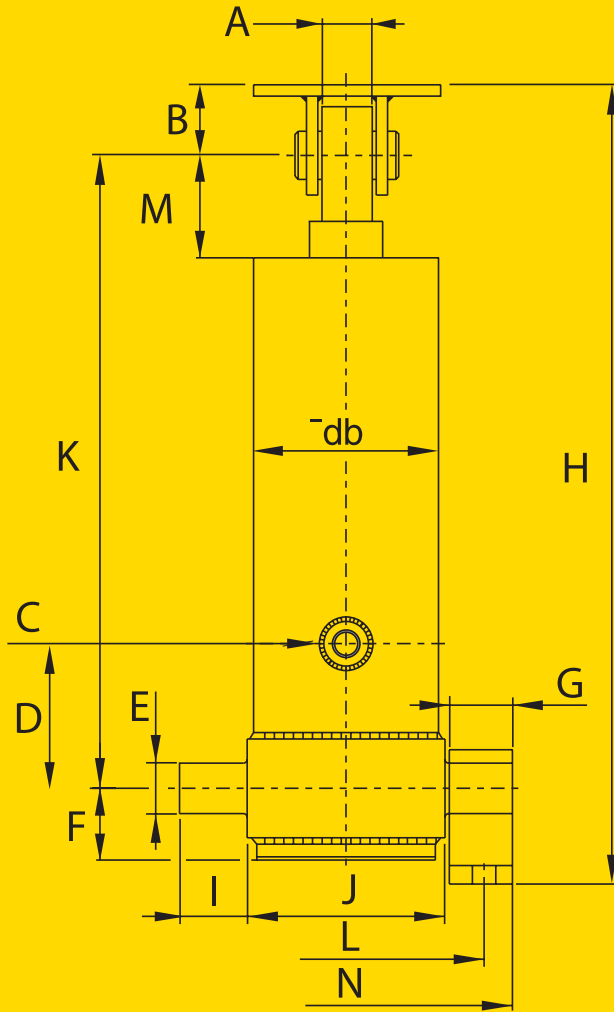
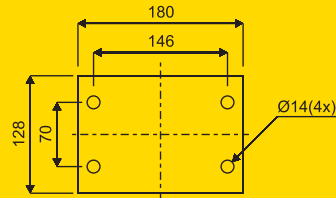


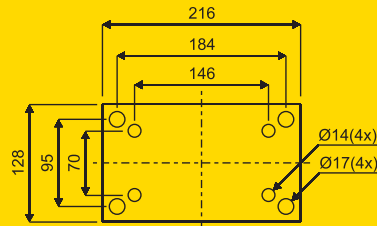
# FLASH HOIST FE SERIES



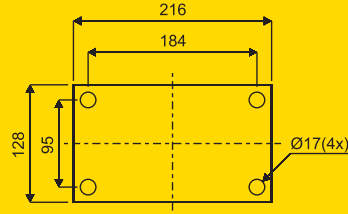
## CLEVIS



FE 110 / 129

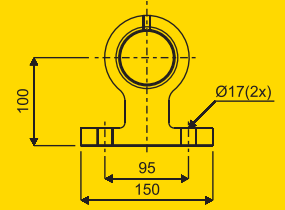


FE 149 / 169 / 191-5

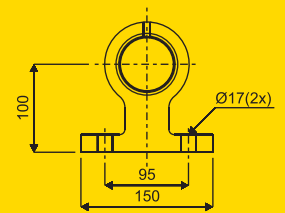


FE 191-4 / 214-4 / 214-5

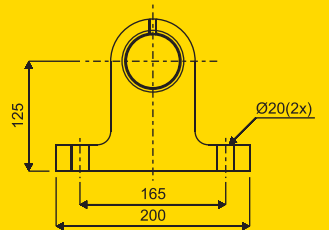
## FOOT MOUNT



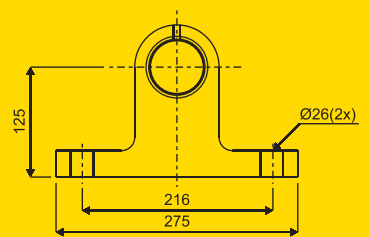
FE 110



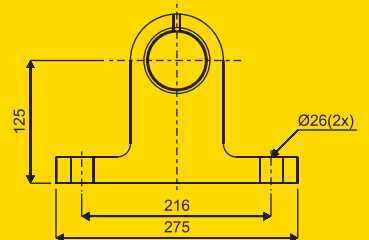
FE 129 / 149



FE 169 / 191



FE 191



FE 214

| HOIST MODEL    | PART NUMBER | NO OF STAGES | STROKE mm | CAPACITY AT 150bar | WEIGHT INCL. FOOTMOUNTS & TEST OIL | TOTAL VOL. LITRES | CLOSED HT. H*mm |
|----------------|-------------|--------------|-----------|--------------------|------------------------------------|-------------------|-----------------|
| FE 110-3-2755  | 71533112    | 3            | 2755      | 20 T               | 99 Kg                              | 21                | 1399            |
| FE 110-3-3205  | 71533162    | 3            | 3205      | 20 T               | 108 Kg                             | 24                | 1545            |
| FE 110-3-3460  | 71533182    | 3            | 3460      | 20 T               | 122 Kg                             | 26                | 1634            |
| FE 129-3-2755  | 71534112    | 3            | 2755      | 28 T               | 120 Kg                             | 30                | 1399            |
| FE 129-3-2980  | 71534132    | 3            | 2980      | 28 T               | 126 Kg                             | 32                | 1474            |
| FE 129-3-3205  | 71534164    | 3            | 3205      | 28 T               | 139 Kg                             | 34                | 1549            |
| FE 129-3-3460  | 71534182    | 3            | 3460      | 28 T               | 139 Kg                             | 37                | 1634            |
| FE 129-3-3880  | 71534222    | 3            | 3880      | 28 T               | 159 Kg                             | 42                | 1794            |
| FE 149-3-4090  | 71535242    | 3            | 4090      | 40 T               | 184 Kg                             | 59                | 1864            |
| FE 149-4-4280  | 71535262    | 4            | 4280      | 35 T               | 171 Kg                             | 55                | 1549            |
| FE 149-4-4620  | 71535292    | 4            | 4620      | 35 T               | 180 Kg                             | 59                | 1634            |
| FE 149-4-6100  | 71535482    | 4            | 6100      | 30 T               | 235 Kg                             | 78                | 2054            |
| FE 169-4-5180* | 71536394    | 4            | 5180      | 40 T               | 247 Kg                             | 88                | 1814            |
| FE 169-4-6100* | 71536482    | 4            | 6100      | 40 T               | 281 Kg                             | 103               | 2074            |
| FE 169-4-6500* | 71536532    | 4            | 6500      | 40 T               | 295 Kg                             | 110               | 2174            |
| FE 169-5-6180  | 71536492    | 5            | 6180      | 35 T               | 265 Kg                             | 93                | 1734            |
| FE 191-4-7220  | 71537642    | 4            | 7220      | 50 T               | 395 Kg                             | 158               | 2387            |
| FE 191-5-6180  | 71537492    | 5            | 6180      | 55 T               | 315 Kg                             | 122               | 1737            |
| FE 191-5-6480  | 71537524    | 5            | 6480      | 55 T               | 320 Kg                             | 127               | 1817            |
| FE 214-4-7220  | 71538642    | 4            | 7220      | 70 T               | 468 Kg                             | 202               | 2382            |
| FE 214-5-7130  | 71538586    | 5            | 7130      | 60 T               | 405 Kg                             | 180               | 1974            |

\* H closed height is including 20mm pull out  
\* These hoist are available fully hard chromed

Hyva Altatec is not responsible for incorrect results obtained with figures in this document. Information is for reference only.  
For detailed information and for specific tipping capacities against known operating conditions contact Hyva Altatec.